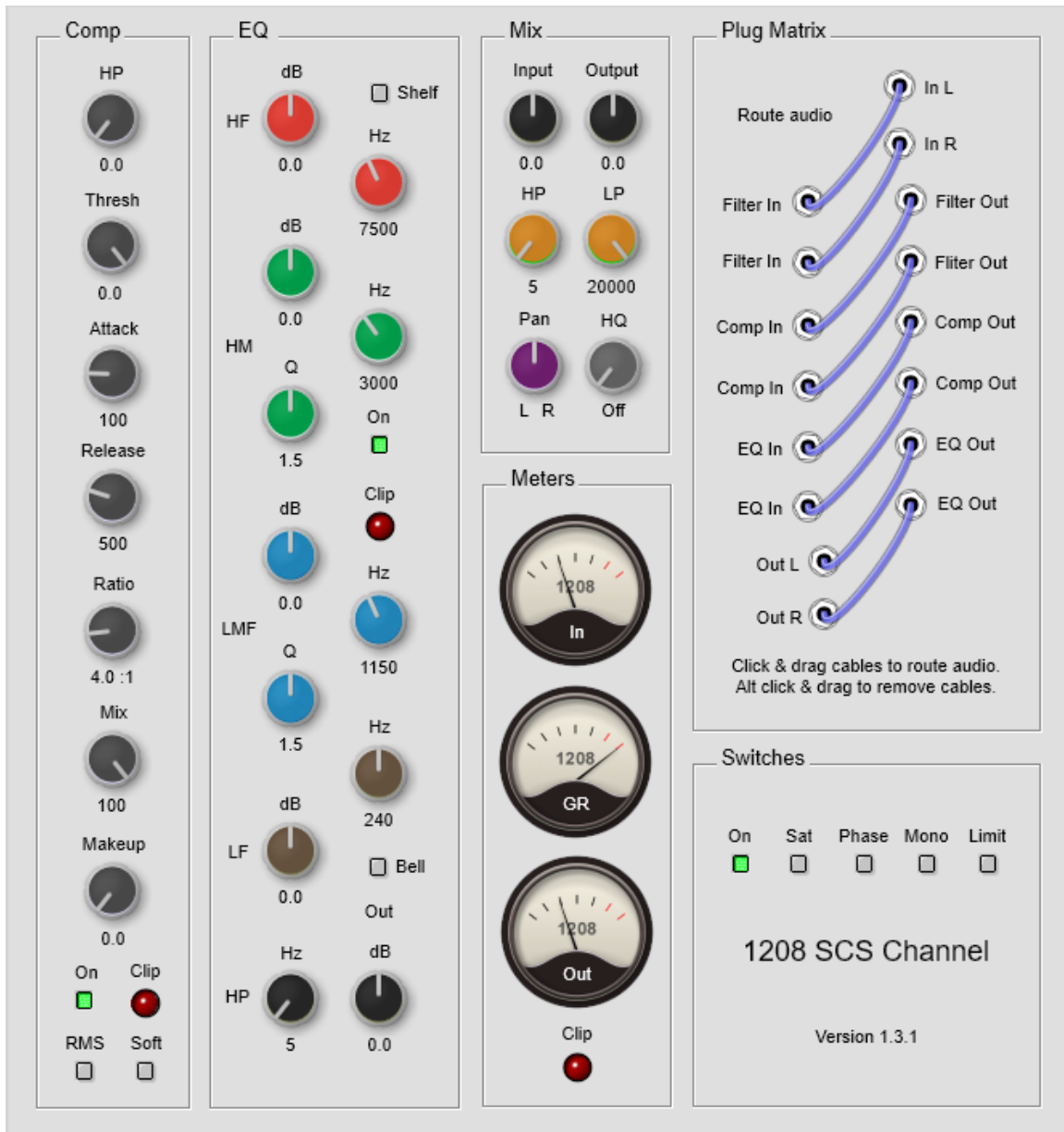


1208 Audio - SCS Channel Strip

Windows 64 Bit VST2 & VST3 Plugin



64 bit VST2: Copy the entire folder "SCS_VST2_x64" to your 64 bit VST2 folder.

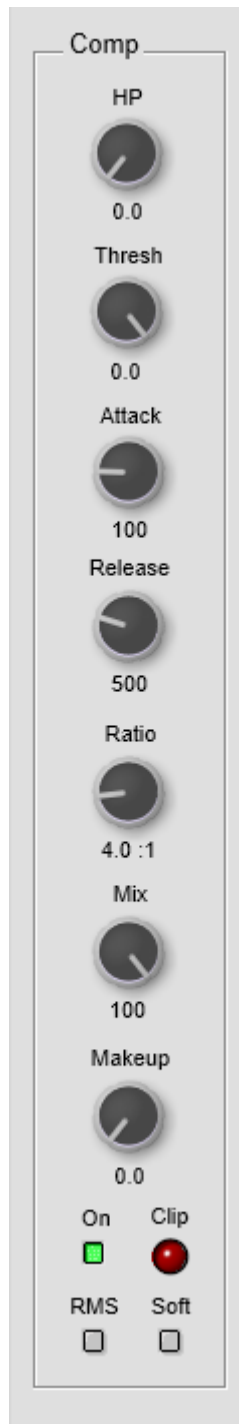
64 bit VST3: Copy the entire folder "SCS_VST3_x64" to your 64 bit VST3 folder.

Description:

The 1208 SCS Channel was designed to be used on any channel or bus. It's routable compressor, EQ, high & low pass filters allow for a variety configurations to suit your needs.

Simply use the patch cables to route your signal to each effect in whatever order works best for your track.

Compressor Controls:



HP – High pass internal filter. Used to reduce the compressors response to low frequencies.

Thresh – The amount of gain reduction applied to a signal that exceeds the threshold level, in decibels.

Attack – How fast the compressor responds, in milliseconds, to signala that exceeds the set threshold level.

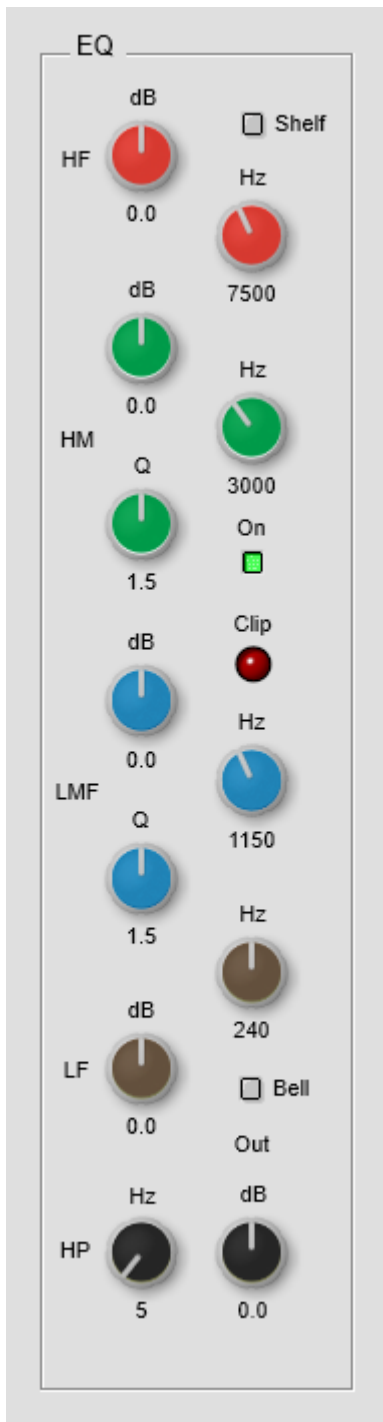
Release – How long it takes, in milliseconds, for the compressor to return to it's uncompressed volume.

Ratio – The ratio to which gain reductions is applied when the signals exceeds the threshold level.

Mix – Blends the compressed signal with the uncompressed signal. Also called "New York" or "Parallel Compression". Useful for compressing the signal yet maintaining desired dynamic response.

Makeup – The gain applied to signal after compression. Used to bring the output volume back to the desired level.

Equalizer Controls:



HF & LF – High and low frequency filters with selectable shelving & bell curves.

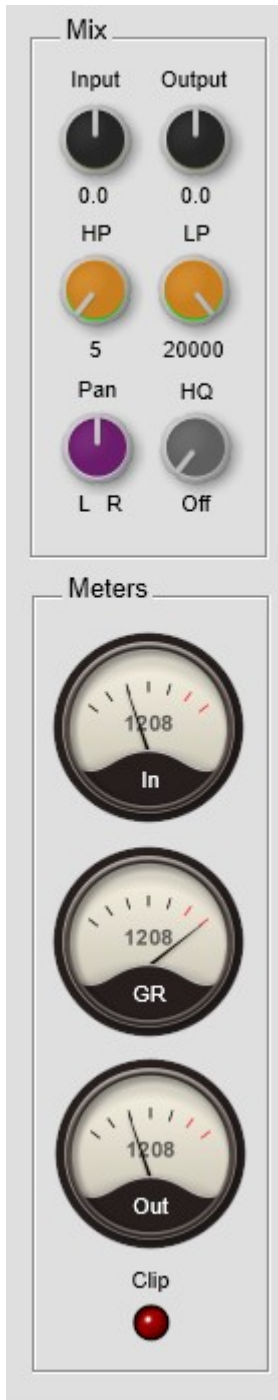
HM & LM – High medium and low medium frequency bell curve filters.

HP – Butterworth high pass filter to cut low frequencies.

dB – The amount of gain applied to the frequency +/- in decibels.

Q – The bandwidth that will be cut or boosted by adjusting the gain (dB). Higher Q's will widen the frequency range, while lower values will narrow it.

Out – The overall gain +/- applied to the signal after equalization.



Input – The overall input level in decibels.

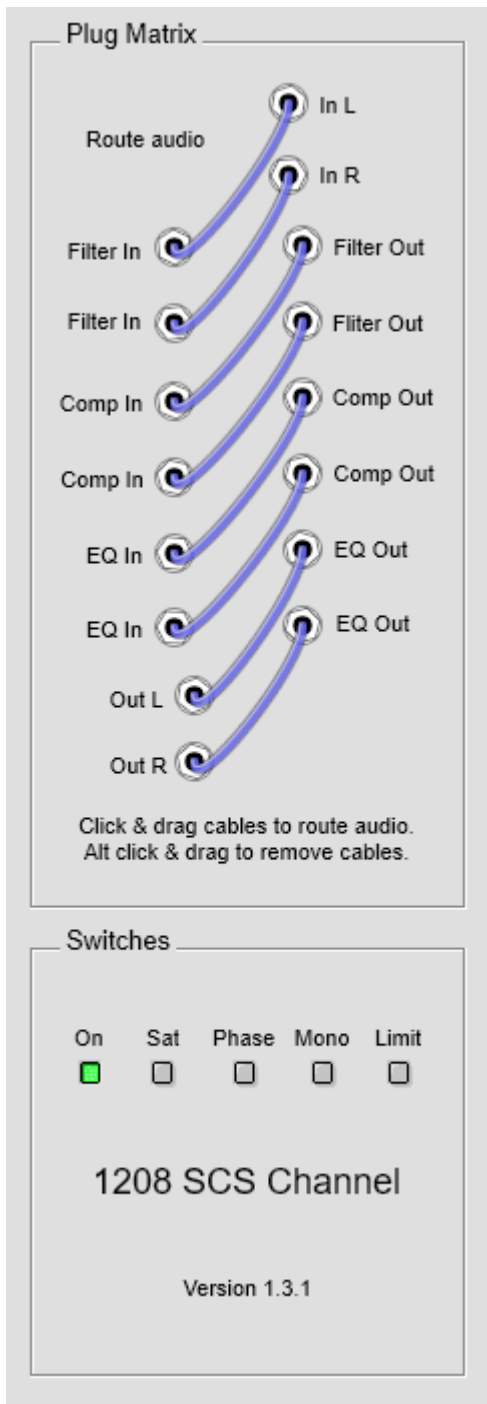
Output – The overall output level in decibels.

HP & LP – Routable high and low pass Butterworth filters.

Pan – Balance stereo signals left & right.

HQ – The amount of oversampling applied to the entire plugin. Ranges from 0 to 8x.

Meters – Input level, output level & compressor gain reduction meters.



Plug Matrix – Left click and drag to connect cables to the different effects in the desired order. Alt click & drag to remove cables.

On – Turns the plugin on/off.

Sat – Gently warms the signal with a soft saturation.

Phase – Inverts the phase of the signal.

Mono – Converts stereo signals to mono.

Limit – Brickwall limiter to prevent signal clipping.

<https://1208audio.com/contact>